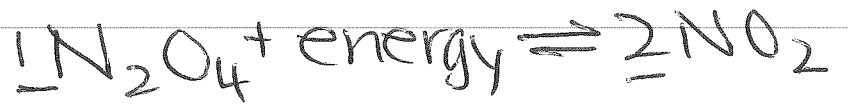
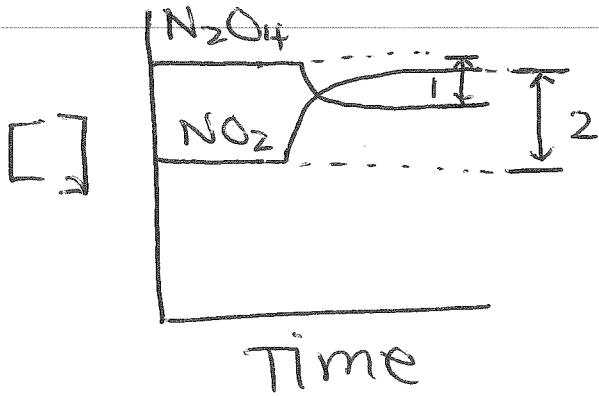
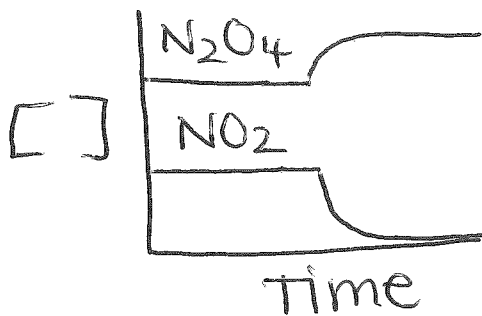


# Graphs - Le Chatelier's Principle

## a) Temperature

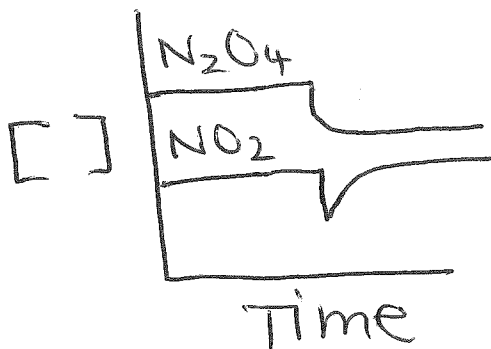


increase temperature

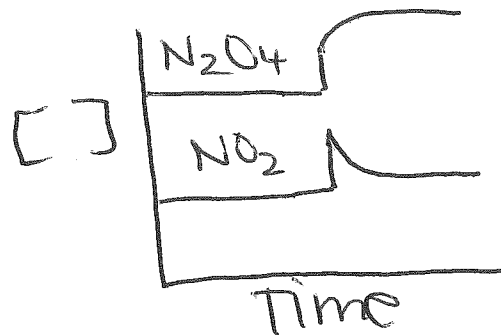


decrease temperature

## b) Pressure

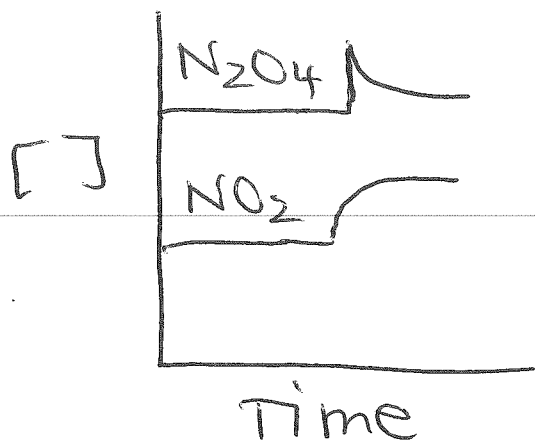


decrease pressure

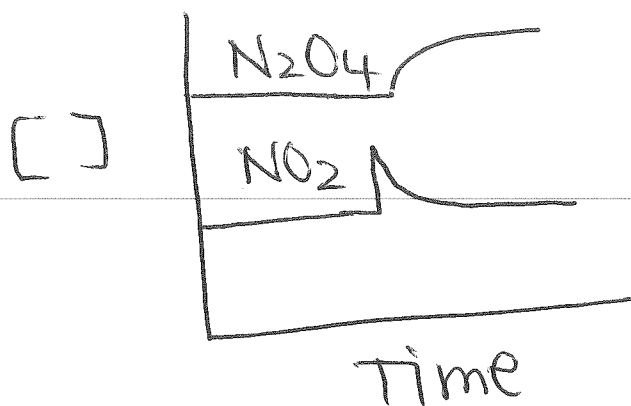


increase pressure

### c) Concentration



increase  $\text{N}_2\text{O}_4$



increase  $\text{NO}_2$

### Summary

a) Temp: concn slowly change — no sudden change on graph

b) Pressure: + concn of all gases suddenly changes

c) Concentration: concn of one substance suddenly changes